

Certificate of Analysis

SLU-PP-332

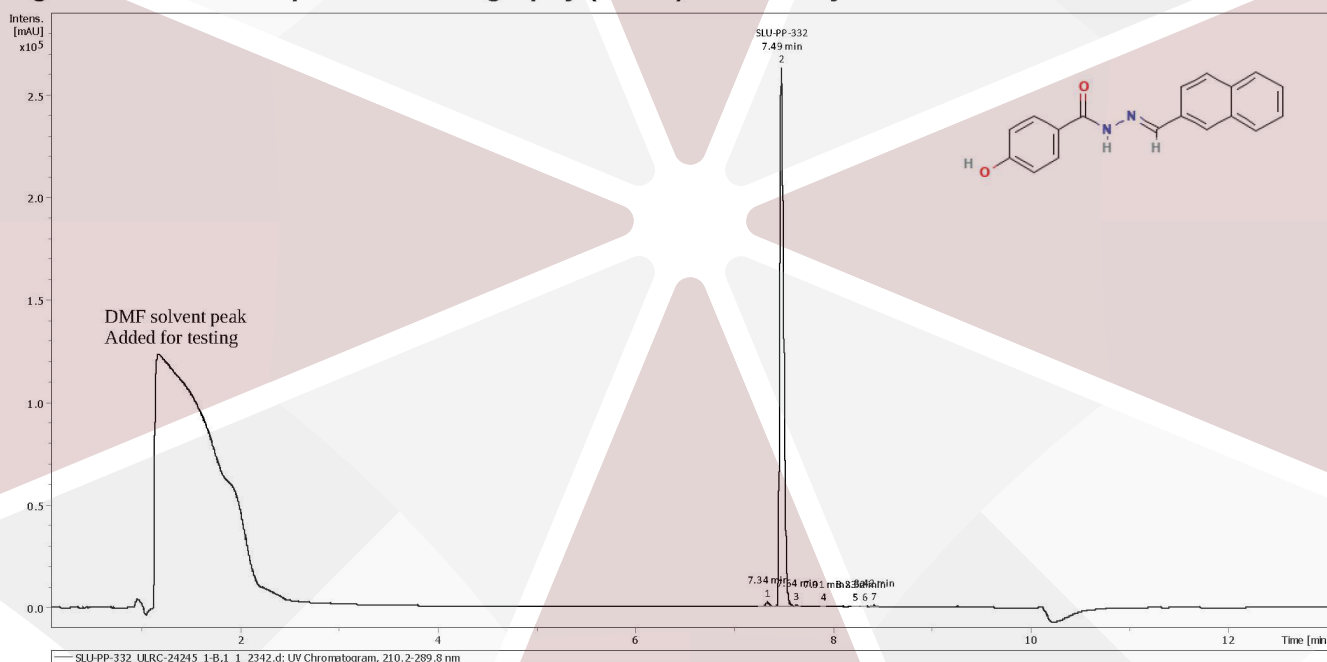
4-hydroxy-N-[(E)-naphthalen-2-ylmethylideneamino]benzamide

Compound	: SLU-PP-332	Client	: UMBRELLA.us
Lot number	: ULRC-24245		: 3280 E Hemisphere Loop
Analysis date	: 2024-05-01		: Tucson, Arizona 85706
Purity %	: 99.00%		
Method	: HPLC-UV-MS		

PubChem CID: 135741221

<https://pubchem.ncbi.nlm.nih.gov/compound/135741221>

High Performance Liquid Chromatography (HPLC) UV – Purity Test



PEAK LIST		Number of detected peaks: 7		
	Time (min)	Area	%Area	
1	7.34	4.70E+03	0.64	
2	7.49	7.25E+05	99.00	SLU-PP-332
3	7.64	4.89E+02	0.07	
4	7.91	2.00E+02	0.03	
5	8.23	1.03E+03	0.14	
6	8.32	3.63E+02	0.05	
7	8.42	1.33E+03	0.18	

Analysis Performed by
 Ken Pendarvis, ChE
 Analytical Chemist
 MZ Biolabs
contact@mzbiolabs.com



2024-05-02

SLU-PP-332

PubChem CID: 135741221

<https://pubchem.ncbi.nlm.nih.gov/compound/135741221>

Mass Spectrometry (MS) – Identity Test

Identity confirmed using HPLC-MS

Molecular weight calculated using monoisotopic m/z values from mass spectrum

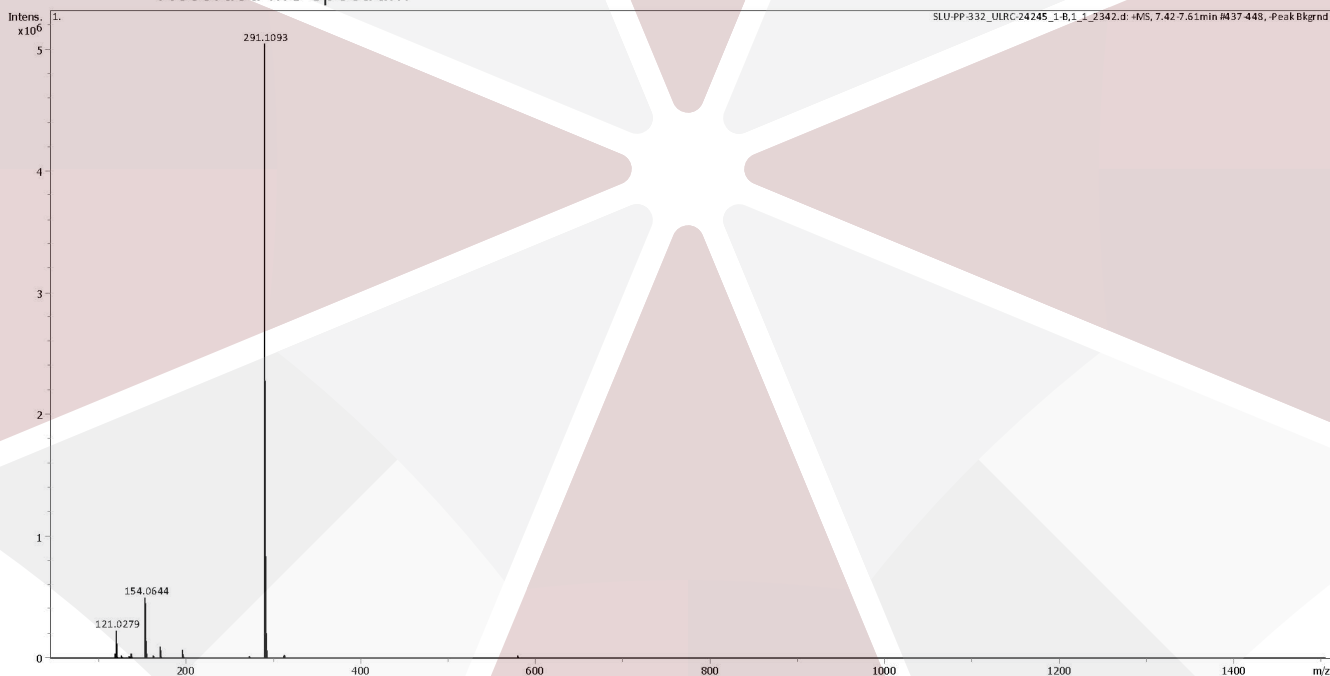
Expected monoisotopic mass : 290.11 Da

Measured monoisotopic mass : 290.11 Da

Molecular weight confirmed

Note : Monoisotopic m/z values are not easily seen in full spectrum view for larger molecules and peptides. The dominant isotopic peak (base peak) shown in the spectrum below can be used to approximate the average molecular weight frequently reported by vendors and databases as a secondary means of confirmation.

Recorded MS spectrum



Analysis Performed by
Ken Pendarvis, ChE
Analytical Chemist
MZ Biolabs
contact@mzbiolabs.com



2024-05-02